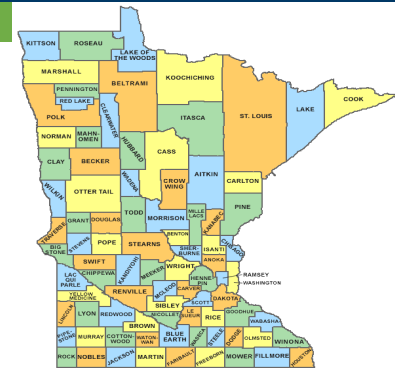


**COUNTY PROFILE**

# Chisago Co.

Chisago Co. is a part of Economic Development Region 7E, which is located in the Central Planning Region.



**55,308** people

Median Age

**40.8** years

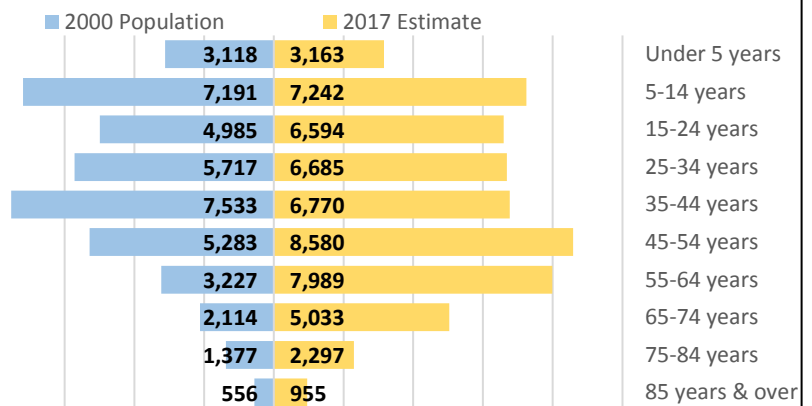
Population change,  
2000-2017

14,207 people  
34.6% increase

Chisago Co. was the 18th largest county in 2017 and the 5th fastest growing county in the state from 2000 to 2017. Chisago Co.'s population was aging - the number of people aged 65 years and over increased by 4238 people from 2000 to 2017.

Age Group	Population	Percentage
Under 5 years	3,163	5.7%
5-14 years	7,242	13.1%
15-24 years	6,594	11.9%
25-34 years	6,685	12.1%
35-44 years	6,770	12.2%
45-54 years	8,580	15.5%
55-64 years	7,989	14.4%
65-74 years	5,033	9.1%
75-84 years	2,297	4.2%
85 years & over	955	1.7%
<b>Total Population</b>	<b>55,308</b>	<b>100.0%</b>

Population Pyramid, 2000-2017

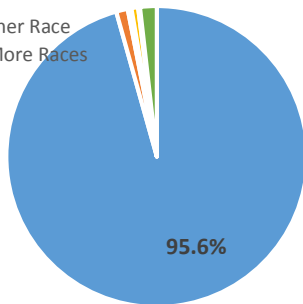


Source: U.S. Census Bureau, Population Estimates

Chisago Co.'s population was becoming more diverse over time. Since 2000, the county's white population increased and the number of people of other races increased.

Population by Race, 2016

- White
- Black or African American
- American Indian
- Asian
- Some Other Race
- Two or More Races



Race and Hispanic Origin, 2016	Chisago Co.			Minnesota	
	Number	Percent	Change from 2000-2016	Percent	Change from 2000-2016
<b>Total</b>	<b>54,041</b>	<b>100.0%</b>	<b>31.5%</b>	<b>100.0%</b>	<b>10.8%</b>
White	51,690	95.6%	29.4%	84.3%	4.5%
Black or African American	672	1.2%	220.0%	5.7%	81.0%
American Indian or Alaska Native	218	0.4%	16.6%	1.0%	3.5%
Asian or Other Pac. Islanders	386	0.7%	29.5%	4.6%	72.8%
Some Other Race	107	0.2%	-15.1%	1.6%	34.2%
Two or More Races	968	1.8%	196.0%	2.7%	79.5%
Hispanic or Latino origin	1,044	1.9%	120.7%	5.1%	92.5%

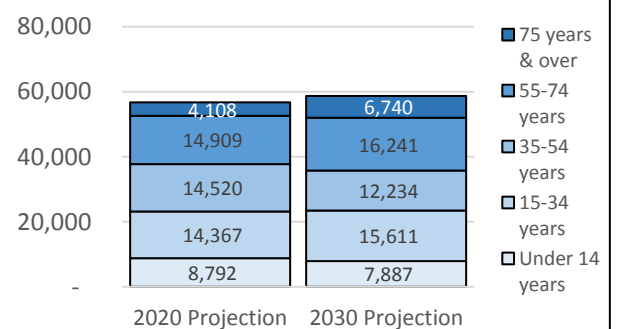
Source: U.S. Census Bureau, 2012-2016 American Community Survey

Chisago Co. enjoyed a natural increase - more births than deaths from 2010 to 2017, and also experienced net in-migration - more people moved in than moved out. Chisago Co.'s population is expected to grow from 2020 to 2030.

Chisago Co.	2020 Projection	2030 Projection	2020-2030 Change	
			Numeric	Percent
Under 14 years	8,792	7,887	-905	-10.3%
15-34 years	14,367	15,611	1,244	8.7%
35-54 years	14,520	12,234	-2,286	-15.7%
55-74 years	14,909	16,241	1,332	8.9%
75 years & over	4,108	6,740	2,632	64.1%
<b>Total</b>	<b>56,696</b>	<b>58,713</b>	<b>2,017</b>	<b>3.6%</b>

Source: Minnesota State Demographic Center

Projections by Age Group, 2020-2030



# Chisago Co.

Chisago Co.'s labor force expanded, growing even faster than the state's 7.1% growth rate from 2002 to 2017.

**29,432** | available workers

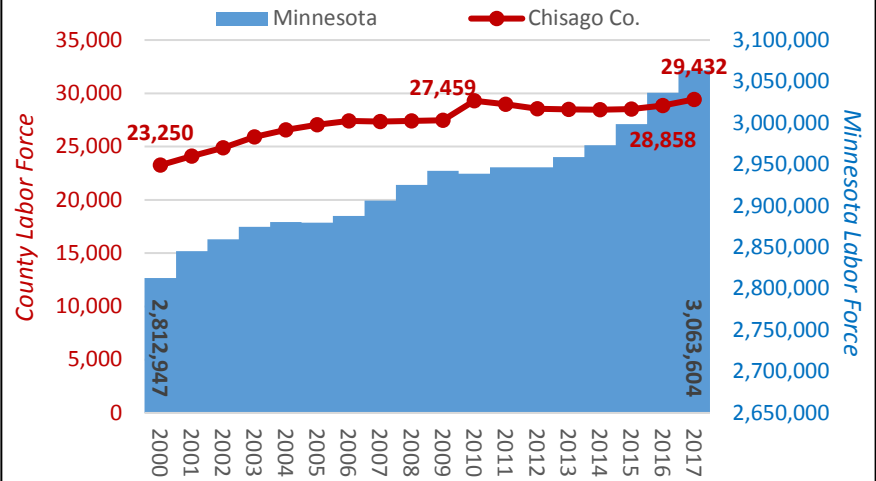
Labor Force change,  
2002-2017 | 4,545 workers  
18.3% increase

**4.1%** | unemployment rate

**2.2** | jobseekers per vacancy

Source: DEED Local Area Unemployment Statistics

## Annual Labor Force Estimates



Chisago Co. was home to 1105 business establishments providing an average of 15407 jobs in 2017. Chisago Co.'s economy grew from 2012 to 2017, outpacing the state's 7.9% growth rate.

**1,105** | business establishments

**\$43,303** | annual average wage

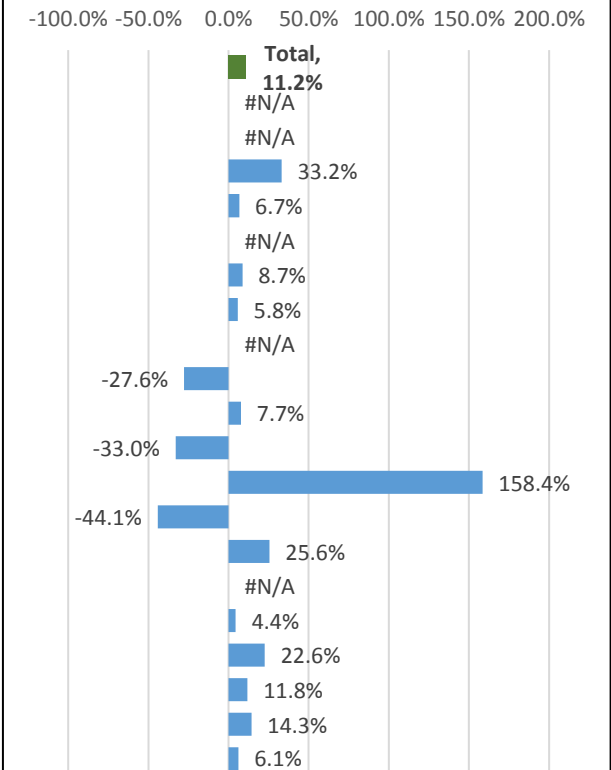
**15,407** | jobs

**\$667,163,537** | total industry payroll

Job change,  
2012-2017 | 1,551 workers  
11.2% increase

Chisago Co. Industry Employment Statistics, 2017	Number of Jobs	Percent of Jobs	Average Annual Wage
Agriculture, Forestry, Fish & Hunt	#N/A	#N/A	#N/A
Mining	#N/A	#N/A	#N/A
Construction	922	6.0%	\$65,706
Manufacturing	2,278	14.8%	\$49,343
Utilities	#N/A	#N/A	#N/A
Wholesale Trade	325	2.1%	\$42,097
Retail Trade	1,669	10.8%	\$28,762
Transportation & Warehousing	#N/A	#N/A	#N/A
Information	41	0.3%	\$53,974
Finance & Insurance	223	1.4%	\$43,761
Real Estate & Rental & Leasing	65	0.4%	\$29,978
Professional & Technical Services	659	4.3%	\$102,171
Management of Companies	19	0.1%	\$53,713
Admin. Support & Waste Mgmt. Svcs.	486	3.2%	\$40,720
Educational Services	#N/A	#N/A	#N/A
Health Care & Social Assistance	3,878	25.2%	\$33,145
Arts, Entertainment, & Recreation	396	2.6%	\$13,131
Accommodation & Food Services	1,302	8.5%	\$14,809
Other Services	407	2.6%	\$25,464
Public Administration	1,040	6.8%	\$50,266

## Change in Jobs, 2012-2017



Source: DEED Quarterly Census of Employment & Wages (QCEW)

For more information on Chisago Co.'s population, labor force, and economic trends, contact:

**Luke Greiner** | Regional Analyst, Central & Southwest  
 St. Cloud WorkForce Center | 1542 Northway Dr. Door 2 | St. Cloud MN 56303  
 Office: 320-308-5378  
 E-mail: luke.greiner@state.mn.us  
 web: [www.mn.gov/deed/data/regional-lmi/](http://www.mn.gov/deed/data/regional-lmi/)