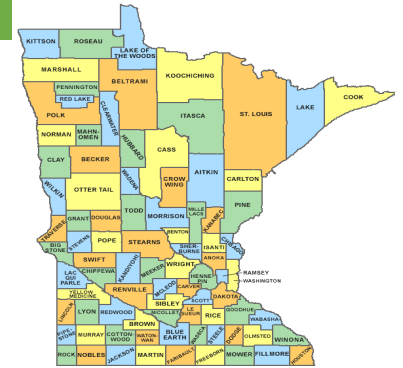


COUNTY PROFILE

Isanti Co.

Isanti Co. is a part of Economic Development Region 7E, which is located in the Central Planning Region.



39,582 | people

Median Age

39.7 years

Population change,
2000-2017

8,295 people
26.5% increase

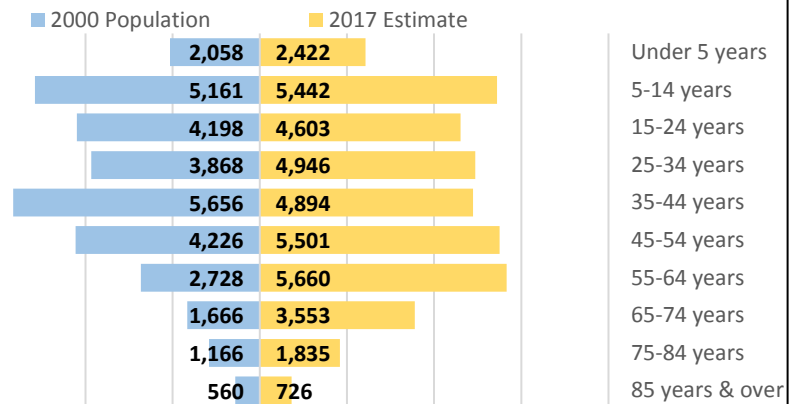
Isanti Co. was the 25th largest county in 2017 and the 7th fastest growing county in the state from 2000 to 2017. Isanti Co.'s population was aging - the number of people aged 65 years and over increased by 2722 people from 2000 to 2017.

Population by Age Group, 2017

Under 5 years	2,422	6.1%
5-14 years	5,442	13.7%
15-24 years	4,603	11.6%
25-34 years	4,946	12.5%
35-44 years	4,894	12.4%
45-54 years	5,501	13.9%
55-64 years	5,660	14.3%
65-74 years	3,553	9.0%
75-84 years	1,835	4.6%
85 years & over	726	1.8%
Total Population	39,582	100.0%

Source: U.S. Census Bureau, Population Estimates

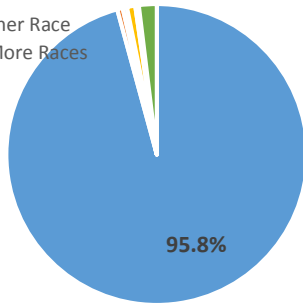
Population Pyramid, 2000-2017



Isanti Co.'s population was becoming more diverse over time. Since 2000, the county's white population increased and the number of people of other races increased.

Population by Race, 2016

- White
- Black or African American
- American Indian
- Asian
- Some Other Race
- Two or More Races



Race and Hispanic Origin, 2016	Isanti Co.			Minnesota	
	Number	Percent	Change from 2000-2016	Percent	Change from 2000-2016
Total	38,461	100.0%	22.9%	100.0%	10.8%
White	36,830	95.8%	20.6%	84.3%	4.5%
Black or African American	228	0.6%	185.0%	5.7%	81.0%
American Indian or Alaska Native	176	0.5%	-3.3%	1.0%	3.5%
Asian or Other Pac. Islanders	345	0.9%	171.7%	4.6%	72.8%
Some Other Race	144	0.4%	171.7%	1.6%	34.2%
Two or More Races	738	1.9%	151.0%	2.7%	79.5%
Hispanic or Latino origin	683	1.8%	163.7%	5.1%	92.5%

Source: U.S. Census Bureau, 2012-2016 American Community Survey

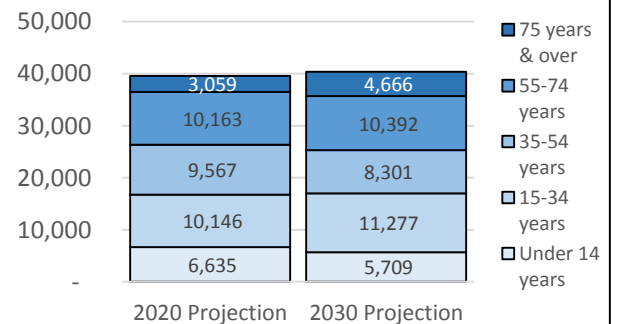
Isanti Co. enjoyed a natural increase - more births than deaths from 2010 to 2017, and also experienced net in-migration - more people moved in than moved out. Isanti Co.'s population is expected to grow from 2020 to 2030.

Population Projections, 2020-2030

Isanti Co.	2020 Projection	2030 Projection	2020-2030 Change	
			Numeric	Percent
Under 14 years	6,635	5,709	-926	-14.0%
15-34 years	10,146	11,277	1,131	11.1%
35-54 years	9,567	8,301	-1,266	-13.2%
55-74 years	10,163	10,392	229	2.3%
75 years & over	3,059	4,666	1,607	52.5%
Total	39,570	40,345	775	2.0%

Source: Minnesota State Demographic Center

Projections by Age Group, 2020-2030



Isanti Co.

Isanti Co.'s labor force expanded, growing even faster than the state's 7.1% growth rate from 2002 to 2017.

20,748 available workers

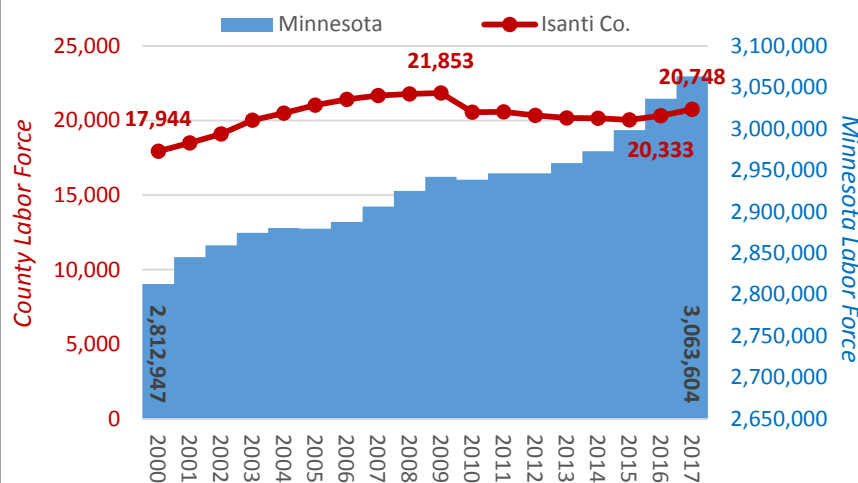
Labor Force change, 2002-2017: **1,635 workers**
8.6% increase

4.5% unemployment rate

2.2 jobseekers per vacancy

Source: DEED Local Area Unemployment Statistics

Annual Labor Force Estimates



Isanti Co. was home to 783 business establishments providing an average of 10849 jobs in 2017. Isanti Co.'s economy grew from 2012 to 2017, lagging the state's 7.9% growth rate.

783 business establishments

\$40,059 annual average wage

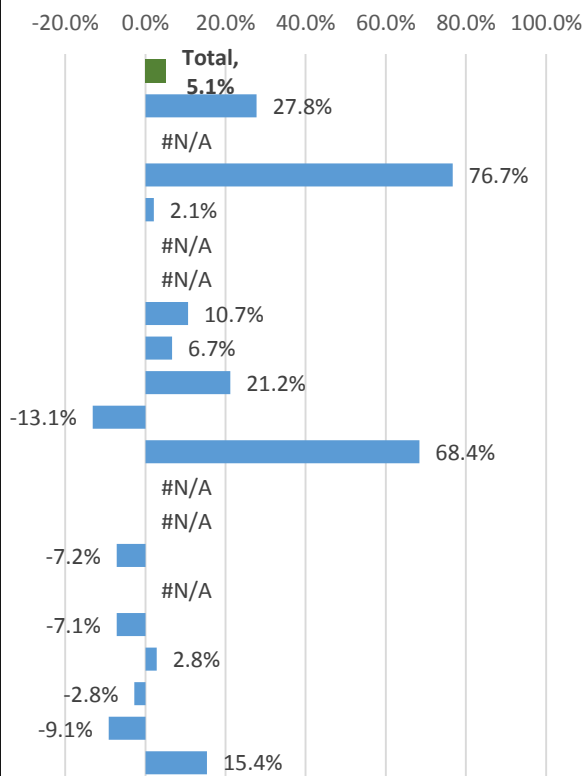
10,849 jobs

\$434,599,314 total industry payroll

Job change, 2012-2017: **529 workers**
5.1% increase

Isanti Co. Industry Employment Statistics, 2017	Number of Jobs	Percent of Jobs	Average Annual Wage
Agriculture, Forestry, Fish & Hunt	115	1.1%	\$28,800
Mining	#N/A	#N/A	#N/A
Construction	486	4.5%	\$44,406
Manufacturing	1,458	13.4%	\$53,369
Utilities	#N/A	#N/A	#N/A
Wholesale Trade	#N/A	#N/A	#N/A
Retail Trade	1,713	15.8%	\$26,195
Transportation & Warehousing	319	2.9%	\$41,176
Information	261	2.4%	\$33,335
Finance & Insurance	251	2.3%	\$48,442
Real Estate & Rental & Leasing	96	0.9%	\$26,998
Professional & Technical Services	#N/A	#N/A	#N/A
Management of Companies	#N/A	#N/A	#N/A
Admin. Support & Waste Mgmt. Svcs.	259	2.4%	\$67,670
Educational Services	1,244	11.5%	\$40,495
Health Care & Social Assistance	2,431	22.4%	\$45,123
Arts, Entertainment, & Recreation	73	0.7%	\$9,434
Accommodation & Food Services	775	7.1%	\$14,277
Other Services	318	2.9%	\$22,658
Public Administration	600	5.5%	\$47,375

Change in Jobs, 2012-2017



Source: DEED Quarterly Census of Employment & Wages (QCEW)

For more information on Isanti Co.'s population, labor force, and economic trends, contact:

Luke Greiner | Regional Analyst, Central & Southwest
 St. Cloud WorkForce Center | 1542 Northway Dr. Door 2 | St. Cloud MN 56303
 Office: 320-308-5378
 E-mail: luke.greiner@state.mn.us
 web: www.mn.gov/deed/data/regional-lmi/