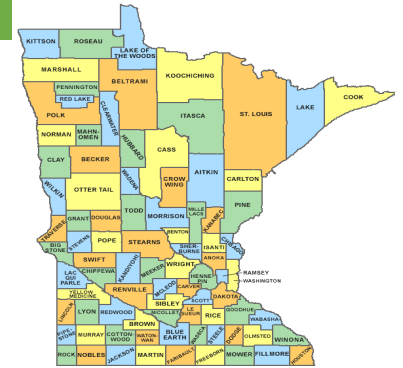


COUNTY PROFILE

Kanabec Co.

Kanabec Co. is a part of Economic Development Region 7E, which is located in the Central Planning Region.



16,024 people

Population change,
2000-2017

1,028 people
6.9% increase

Median Age

44.9 years

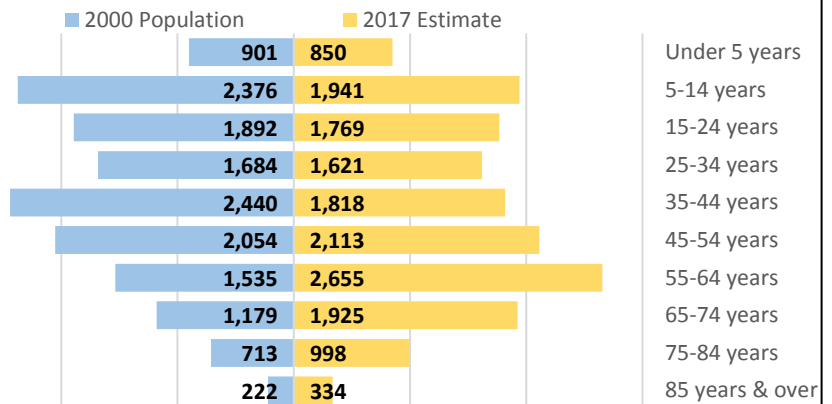
Kanabec Co. was the 52nd largest county in 2017 and the 32nd fastest growing county in the state from 2000 to 2017. Kanabec Co.'s population was aging - the number of people aged 65 years and over increased by 1143 people from 2000 to 2017.

Population by Age Group, 2017

Under 5 years	850	5.3%
5-14 years	1,941	12.1%
15-24 years	1,769	11.0%
25-34 years	1,621	10.1%
35-44 years	1,818	11.3%
45-54 years	2,113	13.2%
55-64 years	2,655	16.6%
65-74 years	1,925	12.0%
75-84 years	998	6.2%
85 years & over	334	2.1%
Total Population	16,024	100.0%

Source: U.S. Census Bureau, Population Estimates

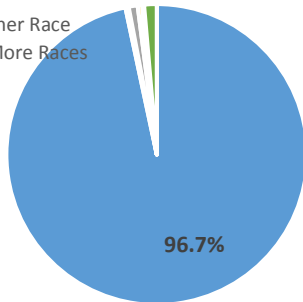
Population Pyramid, 2000-2017



Kanabec Co.'s population was becoming more diverse over time. Since 2000, the county's white population increased and the number of people of other races increased.

Population by Race, 2016

- White
- Black or African American
- American Indian
- Asian
- Some Other Race
- Two or More Races



Race and Hispanic Origin, 2016	Kanabec Co.			Minnesota	
	Number	Percent	Change from 2000-2016	Percent	Change from 2000-2016
Total	15,918	100.0%	6.1%	100.0%	10.8%
White	15,385	96.7%	5.5%	84.3%	4.5%
Black or African American	54	0.3%	107.7%	5.7%	81.0%
American Indian or Alaska Native	155	1.0%	28.1%	1.0%	3.5%
Asian or Other Pac. Islanders	77	0.5%	8.5%	4.6%	72.8%
Some Other Race	30	0.2%	20.0%	1.6%	34.2%
Two or More Races	217	1.4%	30.7%	2.7%	79.5%
Hispanic or Latino origin	246	1.5%	75.7%	5.1%	92.5%

Source: U.S. Census Bureau, 2012-2016 American Community Survey

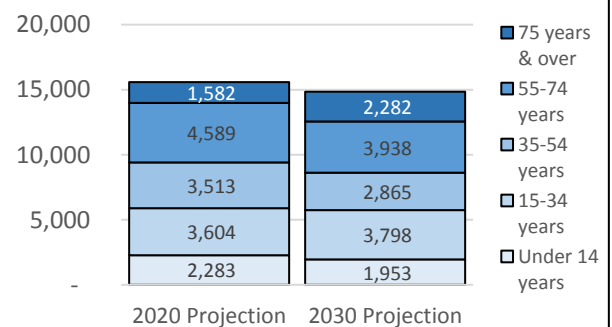
Kanabec Co. enjoyed a natural increase - more births than deaths from 2010 to 2017, and also experienced net out-migration - more people moved out than moved in. Kanabec Co.'s population is expected to decline from 2020 to 2030.

Population Projections, 2020-2030

Kanabec Co.	2020 Projection	2030 Projection	2020-2030 Change	
			Numeric	Percent
Under 14 years	2,283	1,953	-330	-14.5%
15-34 years	3,604	3,798	194	5.4%
35-54 years	3,513	2,865	-648	-18.4%
55-74 years	4,589	3,938	-651	-14.2%
75 years & over	1,582	2,282	700	44.2%
Total	15,571	14,836	-735	-4.7%

Source: Minnesota State Demographic Center

Projections by Age Group, 2020-2030



Kanabec Co.

Kanabec Co.'s labor force expanded, growing even faster than the state's 7.1% growth rate from 2002 to 2017.

9,054 | available workers

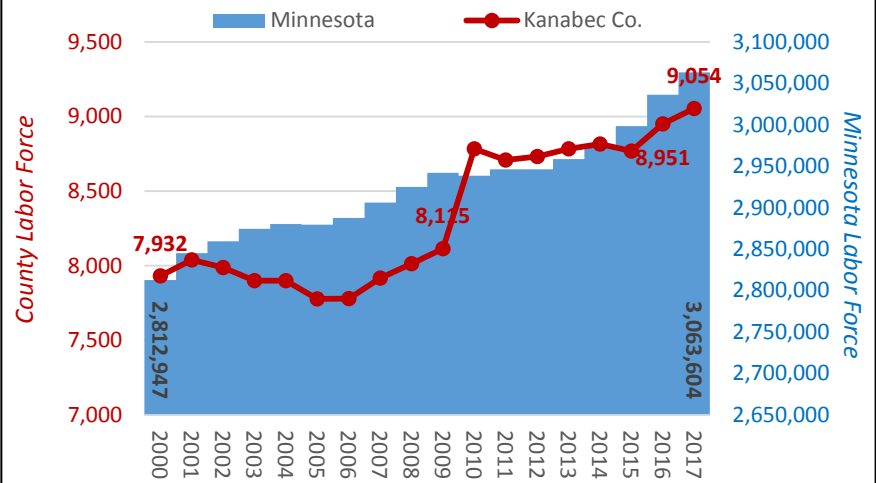
Labor Force change, 2002-2017 | 1,066 workers | 13.3% increase

6.2% | unemployment rate

2.2 | jobseekers per vacancy

Source: DEED Local Area Unemployment Statistics

Annual Labor Force Estimates



Kanabec Co. was home to 310 business establishments providing an average of 3909 jobs in 2017. Kanabec Co.'s economy grew from 2012 to 2017, lagging the state's 7.9% growth rate.

310 | business establishments

\$37,553 | annual average wage

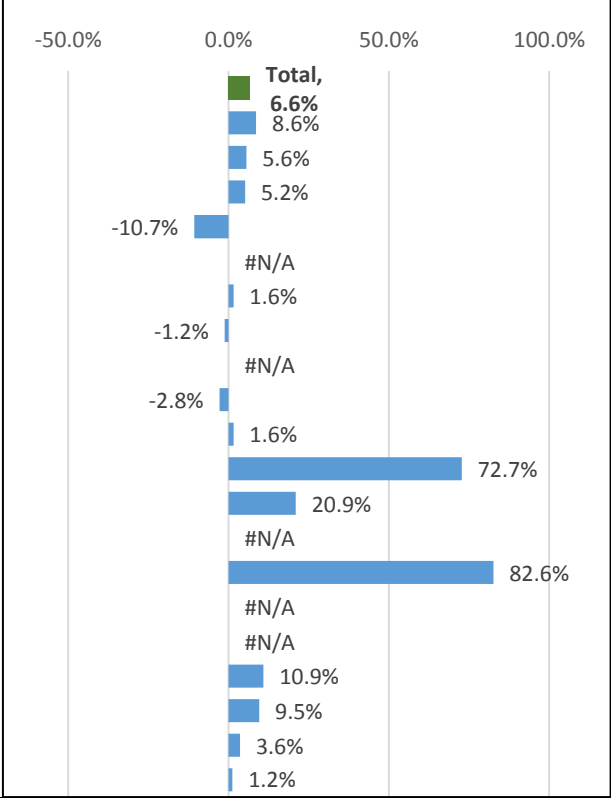
3,909 | jobs

\$146,796,204 | total industry payroll

Job change, 2012-2017 | 241 workers | 6.6% increase

Kanabec Co. Industry Employment Statistics, 2017	Number of Jobs	Percent of Jobs	Average Annual Wage
Agriculture, Forestry, Fish & Hunt	21	0.5%	\$26,087
Mining	19	0.5%	\$52,787
Construction	284	7.3%	\$67,817
Manufacturing	443	11.3%	\$38,958
Utilities	#N/A	#N/A	#N/A
Wholesale Trade	64	1.6%	\$48,956
Retail Trade	502	12.8%	\$24,179
Transportation & Warehousing	#N/A	#N/A	#N/A
Information	35	0.9%	\$28,214
Finance & Insurance	129	3.3%	\$51,324
Real Estate & Rental & Leasing	38	1.0%	\$24,657
Professional & Technical Services	52	1.3%	\$36,457
Management of Companies	#N/A	#N/A	#N/A
Admin. Support & Waste Mgmt. Svcs.	42	1.1%	\$29,607
Educational Services	421	10.8%	\$29,235
Health Care & Social Assistance	920	23.5%	\$47,171
Arts, Entertainment, & Recreation	51	1.3%	\$18,208
Accommodation & Food Services	287	7.3%	\$11,289
Other Services	174	4.5%	\$28,538
Public Administration	334	8.5%	\$41,742

Change in Jobs, 2012-2017



Source: DEED Quarterly Census of Employment & Wages (QCEW)

For more information on Kanabec Co.'s population, labor force, and economic trends, contact:

Luke Greiner | Regional Analyst, Central & Southwest
 St. Cloud WorkForce Center | 1542 Northway Dr. Door 2 | St. Cloud MN 56303
 Office: 320-308-5378
 E-mail: luke.greiner@state.mn.us
 web: www.mn.gov/deed/data/regional-lmi/