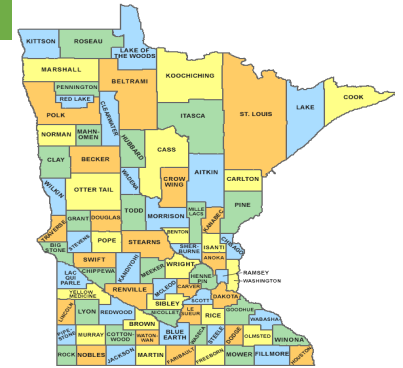


COUNTY PROFILE

Mille Lacs Co.

Mille Lacs Co. is a part of Economic Development Region 7E, which is located in the Central Planning Region.



25,872 people

Median Age

41.5 years

Population change,
2000-2017

3,542 people
15.9% increase

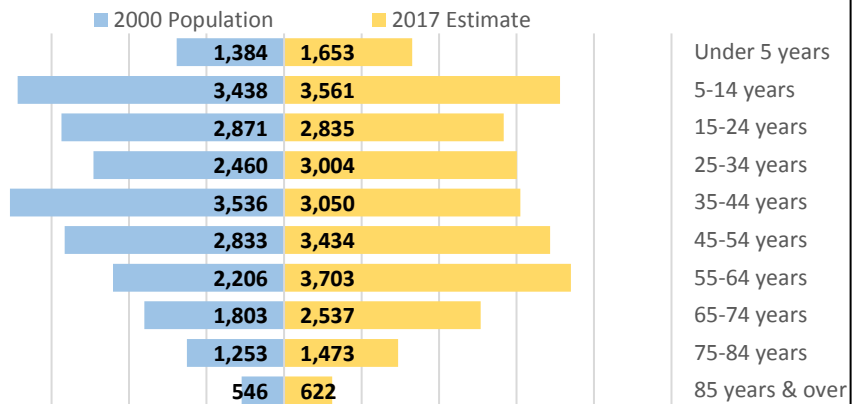
Mille Lacs Co. was the 39th largest county in 2017 and the 19th fastest growing county in the state from 2000 to 2017. Mille Lacs Co.'s population was aging - the number of people aged 65 years and over increased by 1030 people from 2000 to 2017.

Population by Age Group, 2017

Under 5 years	1,653	6.4%
5-14 years	3,561	13.8%
15-24 years	2,835	11.0%
25-34 years	3,004	11.6%
35-44 years	3,050	11.8%
45-54 years	3,434	13.3%
55-64 years	3,703	14.3%
65-74 years	2,537	9.8%
75-84 years	1,473	5.7%
85 years & over	622	2.4%
Total Population	25,872	100.0%

Source: U.S. Census Bureau, Population Estimates

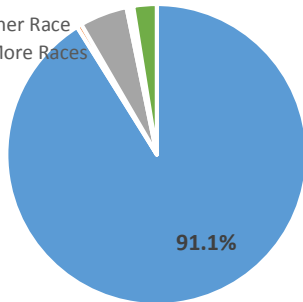
Population Pyramid, 2000-2017



Mille Lacs Co.'s population was becoming more diverse over time. Since 2000, the county's white population increased and the number of people of other races increased.

Population by Race, 2016

- White
- Black or African American
- American Indian
- Asian
- Some Other Race
- Two or More Races



Race and Hispanic Origin, 2016	Mille Lacs Co.			Minnesota	
	Number	Percent	Change from 2000-2016	Percent	Change from 2000-2016
Total	25,788	100.0%	15.5%	100.0%	10.8%
White	23,495	91.1%	12.5%	84.3%	4.5%
Black or African American	136	0.5%	126.7%	5.7%	81.0%
American Indian or Alaska Native	1,322	5.1%	26.4%	1.0%	3.5%
Asian or Other Pac. Islanders	110	0.4%	120.0%	4.6%	72.8%
Some Other Race	75	0.3%	53.1%	1.6%	34.2%
Two or More Races	650	2.5%	176.6%	2.7%	79.5%
Hispanic or Latino origin	528	2.0%	146.7%	5.1%	92.5%

Source: U.S. Census Bureau, 2012-2016 American Community Survey

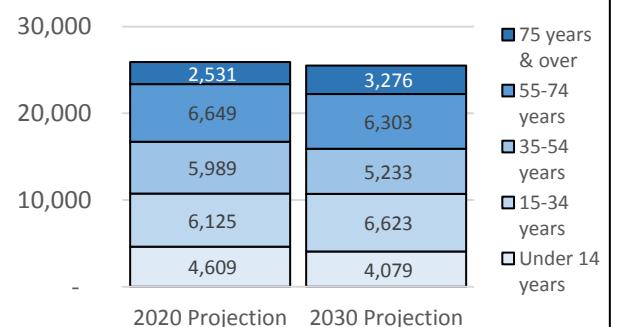
Mille Lacs Co. enjoyed a natural increase - more births than deaths from 2010 to 2017, and also experienced net out-migration - more people moved out than moved in. Mille Lacs Co.'s population is expected to decline from 2020 to 2030.

Population Projections, 2020-2030

	2020 Projection	2030 Projection	2020-2030 Change	
			Numeric	Percent
Mille Lacs Co.				
Under 14 years	4,609	4,079	-530	-11.5%
15-34 years	6,125	6,623	498	8.1%
35-54 years	5,989	5,233	-756	-12.6%
55-74 years	6,649	6,303	-346	-5.2%
75 years & over	2,531	3,276	745	29.4%
Total	25,903	25,514	-389	-1.5%

Source: Minnesota State Demographic Center

Projections by Age Group, 2020-2030



Mille Lacs Co.

Mille Lacs Co.'s labor force expanded, growing even faster than the state's 7.1% growth rate from 2002 to 2017.

12,901 | available workers

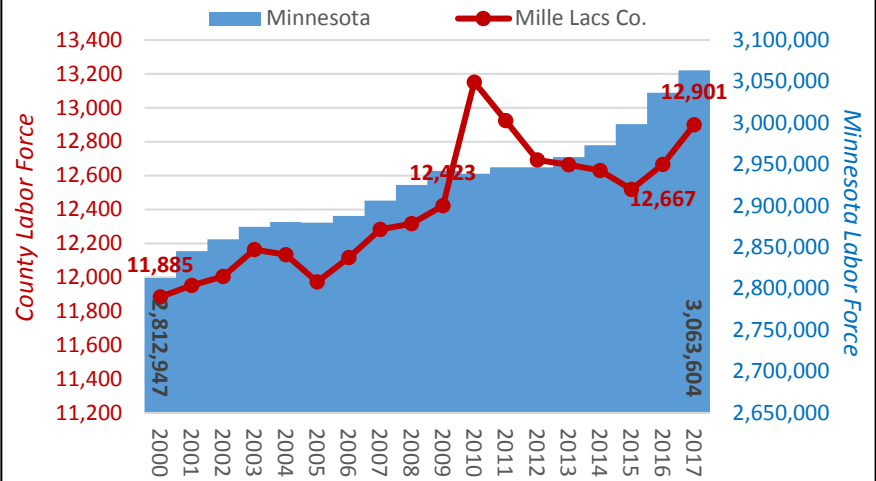
Labor Force change, 2002-2017 | 895 workers
7.5% increase

5.7% | unemployment rate

2.2 | jobseekers per vacancy

Source: DEED Local Area Unemployment Statistics

Annual Labor Force Estimates



Mille Lacs Co. was home to 686 business establishments providing an average of 9633 jobs in 2017. Mille Lacs Co.'s economy grew from 2012 to 2017, lagging the state's 7.9% growth rate.

686 | business establishments

\$34,928 | annual average wage

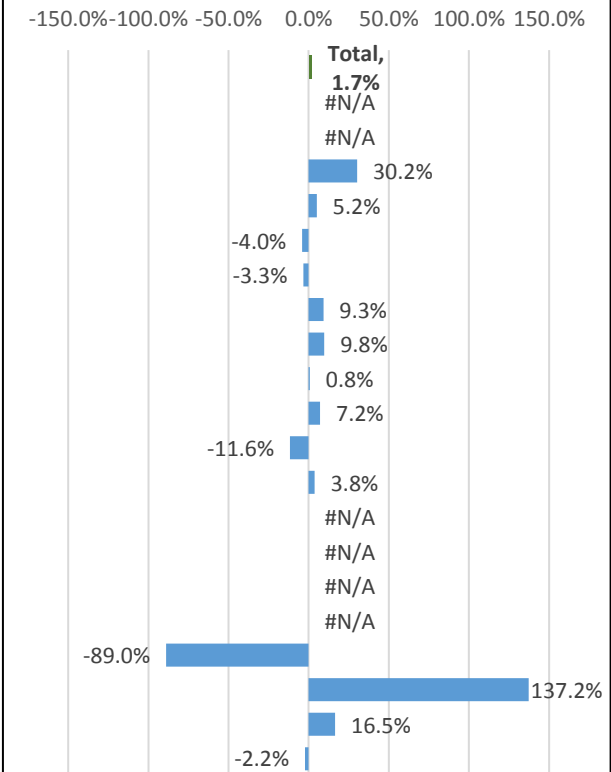
9,633 | jobs

\$336,462,696 | total industry payroll

Job change, 2012-2017 | 158 workers
1.7% increase

Mille Lacs Co. Industry Employment Statistics, 2017	Number of Jobs	Percent of Jobs	Average Annual Wage
Agriculture, Forestry, Fish & Hunt	#N/A	#N/A	#N/A
Mining	#N/A	#N/A	#N/A
Construction	457	4.7%	\$51,160
Manufacturing	735	7.6%	\$40,480
Utilities	48	0.5%	\$81,552
Wholesale Trade	146	1.5%	\$47,049
Retail Trade	1,011	10.5%	\$22,552
Transportation & Warehousing	225	2.3%	\$28,759
Information	131	1.4%	\$39,951
Finance & Insurance	209	2.2%	\$53,911
Real Estate & Rental & Leasing	38	0.4%	\$22,329
Professional & Technical Services	301	3.1%	\$57,140
Management of Companies	#N/A	#N/A	#N/A
Admin. Support & Waste Mgmt. Svcs.	#N/A	#N/A	#N/A
Educational Services	#N/A	#N/A	#N/A
Health Care & Social Assistance	#N/A	#N/A	#N/A
Arts, Entertainment, & Recreation	141	1.5%	\$13,571
Accommodation & Food Services	1,824	18.9%	\$21,582
Other Services	289	3.0%	\$18,858
Public Administration	1,179	12.2%	\$43,574

Change in Jobs, 2012-2017



Source: DEED Quarterly Census of Employment & Wages (QCEW)

For more information on Mille Lacs Co.'s population, labor force, and economic trends, contact:

Luke Greiner | Regional Analyst, Central & Southwest
 St. Cloud WorkForce Center | 1542 Northway Dr. Door 2 | St. Cloud MN 56303
 Office: 320-308-5378
 E-mail: luke.greiner@state.mn.us
 web: www.mn.gov/deed/data/regional-lmi/