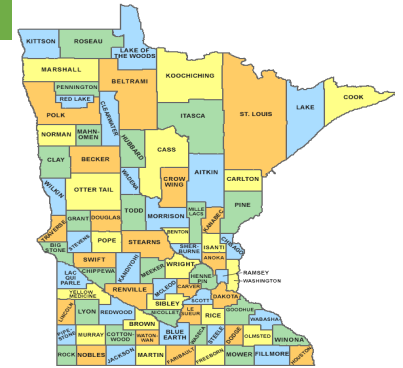


COUNTY PROFILE

Pine Co.

Pine Co. is a part of Economic Development Region 7E, which is located in the Central Planning Region.



29,203 people

Median Age

Population change,
2000-2017

2,673 people
10.1% increase

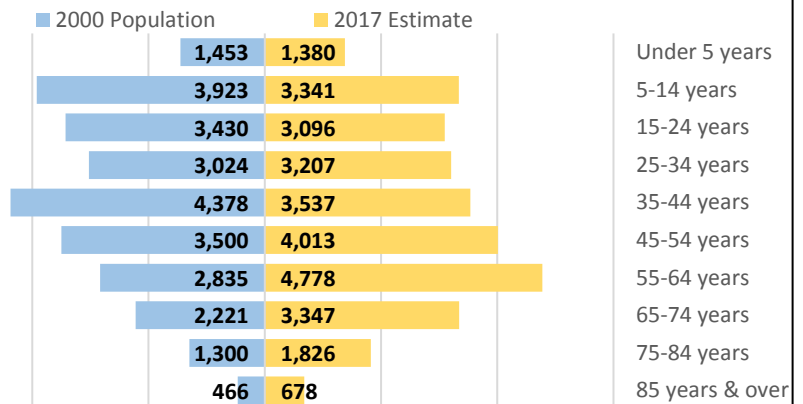
44.7 years

Pine Co. was the 37th largest county in 2017 and the 27th fastest growing county in the state from 2000 to 2017. Pine Co.'s population was aging - the number of people aged 65 years and over increased by 1864 people from 2000 to 2017.

Population by Age Group, 2017

Under 5 years	1,380	4.7%
5-14 years	3,341	11.4%
15-24 years	3,096	10.6%
25-34 years	3,207	11.0%
35-44 years	3,537	12.1%
45-54 years	4,013	13.7%
55-64 years	4,778	16.4%
65-74 years	3,347	11.5%
75-84 years	1,826	6.3%
85 years & over	678	2.3%
Total Population	29,203	100.0%

Population Pyramid, 2000-2017

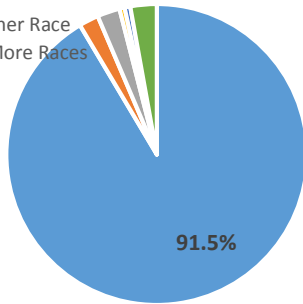


Source: U.S. Census Bureau, Population Estimates

Pine Co.'s population was becoming more diverse over time. Since 2000, the county's white population increased and the number of people of other races increased.

Population by Race, 2016

- White
- Black or African American
- American Indian
- Asian
- Some Other Race
- Two or More Races



Race and Hispanic Origin, 2016	Pine Co.			Minnesota	
	Number	Percent	Change from 2000-2016	Percent	Change from 2000-2016
Total	29,067	100.0%	9.6%	100.0%	10.8%
White	26,585	91.5%	6.1%	84.3%	4.5%
Black or African American	615	2.1%	80.4%	5.7%	81.0%
American Indian or Alaska Native	705	2.4%	-1.1%	1.0%	3.5%
Asian or Other Pac. Islanders	162	0.6%	84.1%	4.6%	72.8%
Some Other Race	177	0.6%	101.1%	1.6%	34.2%
Two or More Races	823	2.8%	225.3%	2.7%	79.5%
Hispanic or Latino origin	803	2.8%	72.7%	5.1%	92.5%

Source: U.S. Census Bureau, 2012-2016 American Community Survey

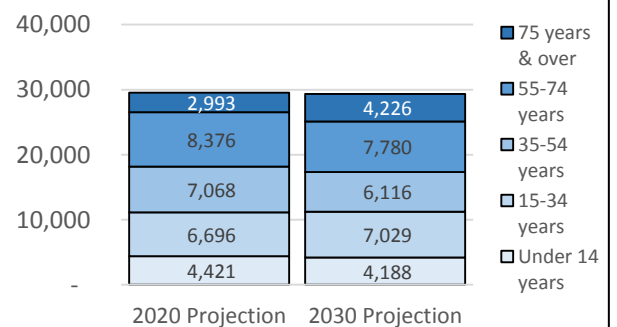
Pine Co. enjoyed a natural increase - more births than deaths from 2010 to 2017, and also experienced net out-migration - more people moved out than moved in. Pine Co.'s population is expected to decline from 2020 to 2030.

Population Projections, 2020-2030

Pine Co.	2020 Projection	2030 Projection	2020-2030 Change	
			Numeric	Percent
Under 14 years	4,421	4,188	-233	-5.3%
15-34 years	6,696	7,029	333	5.0%
35-54 years	7,068	6,116	-952	-13.5%
55-74 years	8,376	7,780	-596	-7.1%
75 years & over	2,993	4,226	1,233	41.2%
Total	29,554	29,339	-215	-0.7%

Source: Minnesota State Demographic Center

Projections by Age Group, 2020-2030



Pine Co.

Pine Co.'s labor force expanded, but grew slower than the state's 7.1% growth rate from 2002 to 2017.

15,042 | available workers

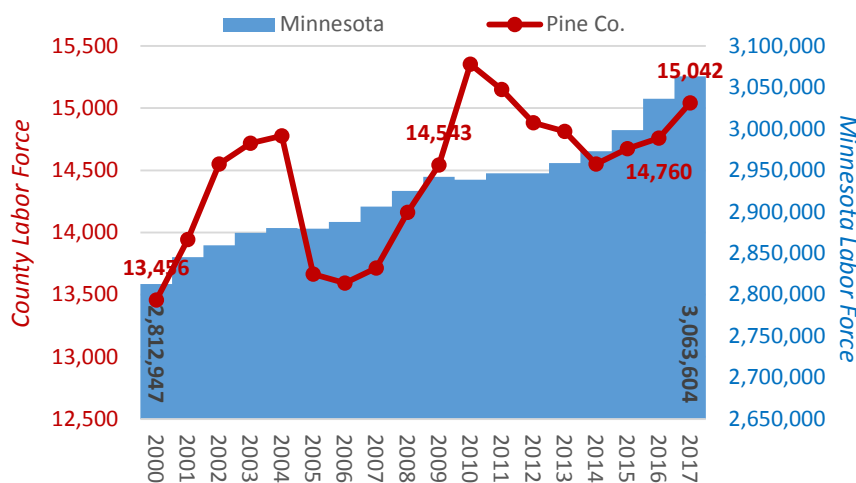
Labor Force change, 2002-2017 | 491 workers
3.4% increase

5.8% | unemployment rate

2.2 | jobseekers per vacancy

Source: DEED Local Area Unemployment Statistics

Annual Labor Force Estimates



Pine Co. was home to 629 business establishments providing an average of 8336 jobs in 2017. Pine Co.'s economy grew from 2012 to 2017, lagging the state's 7.9% growth rate.

629 | business establishments

\$31,138 | annual average wage

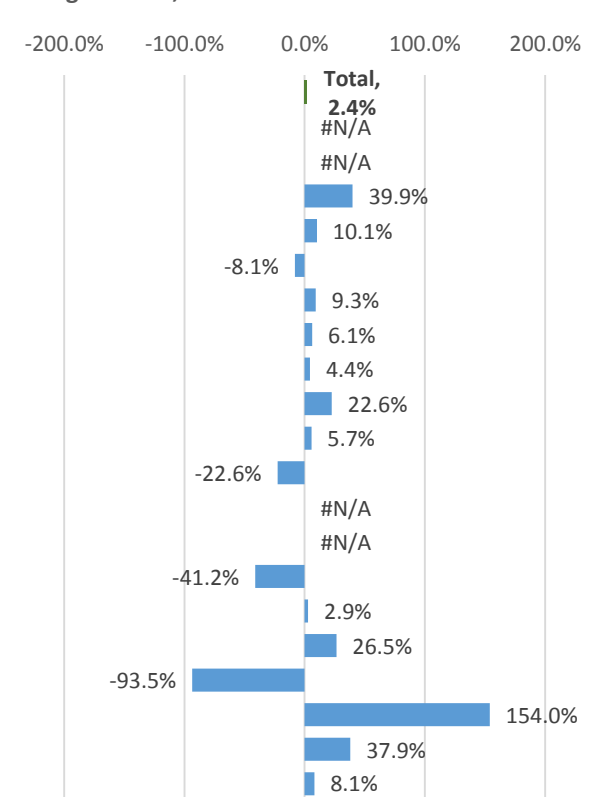
8,336 | jobs

\$259,569,074 | total industry payroll

Job change, 2012-2017 | 193 workers
2.4% increase

Pine Co. Industry Employment Statistics, 2017	Number of Jobs	Percent of Jobs	Average Annual Wage
Agriculture, Forestry, Fish & Hunt	#N/A	#N/A	#N/A
Mining	#N/A	#N/A	#N/A
Construction	519	6.2%	\$41,931
Manufacturing	228	2.7%	\$34,986
Utilities	34	0.4%	\$86,437
Wholesale Trade	118	1.4%	\$29,561
Retail Trade	1,036	12.4%	\$22,168
Transportation & Warehousing	166	2.0%	\$34,791
Information	141	1.7%	\$38,711
Finance & Insurance	168	2.0%	\$43,744
Real Estate & Rental & Leasing	48	0.6%	\$19,694
Professional & Technical Services	121	1.5%	\$11,561
Management of Companies	#N/A	#N/A	#N/A
Admin. Support & Waste Mgmt. Svcs.	128	1.5%	\$19,247
Educational Services	882	10.6%	\$40,529
Health Care & Social Assistance	969	11.6%	\$29,533
Arts, Entertainment, & Recreation	125	1.5%	\$21,447
Accommodation & Food Services	2,332	28.0%	\$22,702
Other Services	280	3.4%	\$21,031
Public Administration	801	9.6%	\$48,299

Change in Jobs, 2012-2017



Source: DEED Quarterly Census of Employment & Wages (QCEW)

For more information on Pine Co.'s population, labor force, and economic trends, contact:

Luke Greiner | Regional Analyst, Central & Southwest
 St. Cloud WorkForce Center | 1542 Northway Dr. Door 2 | St. Cloud MN 56303
 Office: 320-308-5378
 E-mail: luke.greiner@state.mn.us
 web: www.mn.gov/deed/data/regional-lmi/