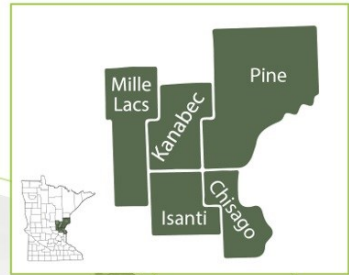


Region 7E Transportation Provider Directory



East Central Regional
Transportation
Coordinating Council

Serving the counties of: Pine, Isanti,
Chisago, Kanabec, Mille Lacs

WHO WE ARE

The East Central Regional Development Commission serves the counties of Pine, Isanti, Chisago, Kanabec, and Mille Lacs. We have been relegated to building a Regional Transportation Coordinating Council through a grant from Minnesota Department of Transportation.

The East Central Regional Transportation Coordinating Council (ECRTCC) has established a vested group of stakeholders working to serve our region's transportation disadvantaged.

Our efforts are to coordinate between transportation providers, service agents, and private sectors to fill gaps, streamline services, and provide further options for those travelling.

CONTACT US

East Central Regional Development Commission
100 Park Street S., Mora, MN 55051

Web: <http://www.ecrdc.org/regional-transit-coordination-council/>

Fax: (320) 679-4120

Community Development:

Karen Onan

Phone: (320) 679-4065, ext. 32

Email: karen.onan@ecrdc.org

Ashley Eckdahl

Phone: (320) 679-4065, ext. 24

Email: ashley.eckdahl@ecrdc.org



TABLE OF CONTENTS

TYPES OF SERVICE IN OUR REGION	4
THE BIG PICTURE	5
OUR MISSION	3
TRANSIT PROVIDERS	4-8
CAR CHARGING STATIONS	9
INDEX	13



TYPES OF SERVICE IN OUR REGION

Public Providers

In our area, Public Providers include the bus systems that operate and serve the general public. They are ADA accessible, and do not have limitations on who can use them. They often have fixed or deviated routes.

Private Providers

Private Providers operate with the personal or individual use of transportation vehicles which are not available for use by the general public, where essentially the user can decide freely on the time and route of transit.

Other: Electric Car Charging/Park & Ride

An electric vehicle charging station, also called electronic charging station (ECS), is an element in an infrastructure that supplies electric energy for the recharging of plug-in electric vehicles—including electric cars, and plug-in hybrids.

Park & Rides are parking lots used as connection points for commuters to leave one vehicle and enter another to continue their transit.



THE BIG PICTURE

How do I get where I need to go?

In a region as rural as ours your transportation needs might be fulfilled by one lone provider, or by a combination of several. Either way, we strive to give you the resources necessary to find your way.

WE AIM TO BE A CONVENIENT SOURCE OF
TRANSPORTATION INFORMATION FOR THE CENTRAL
MINNESOTA REGION.

Inevitable change

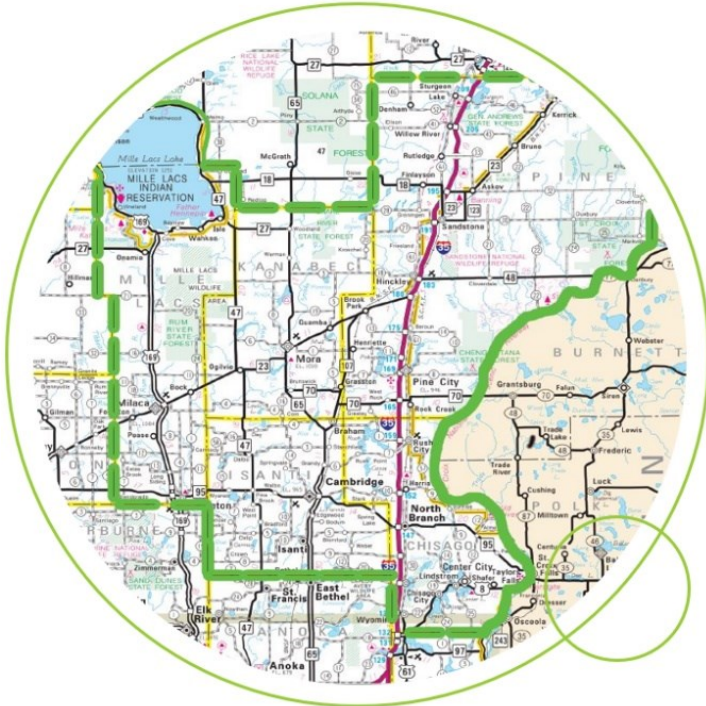
Providers come and go, routes change, schedules shift, rates change... We will do our best to keep this information as up to date as possible. Should you find something to be inaccurate please bring it to our attention so we can make necessary changes to this document. If you have any suggestions that would make this document more useful to yourself or others, they are more than welcome. Thank you!



MISSION

What is our goal?

To coordinate the provision of multimodal transportation services to assure that transportation is convenient, affordable, and will benefit those residents facing transportation barriers throughout the East Central Minnesota Region 7E.



TRANSIT PROVIDERS

- **Allegiance Transportation:** (651) 207-5211, 9550 Whistling Valley Trail, Lake Elmo, MN 55042, fax (651) 294-3083, <http://www.allegiancetransportation.com/> Vans for paratransit and wheelchair clients. Monday-Friday 8-4, private pay option offering individual transport with masks sanitization and driver division. \$65 minimum fee and charge for no load miles.
- **American Transport:** (651) 855-8999, 980 Hathaway Ln NE, Ste 1, Fridley, MN 55432 - bariatric transport, NEMT, STS, and wheelchair times from early morning dialysis until 6pm. \$20 base fee and \$1.80 per mile thereafter. May be added fee for pick-up north of Coon Rapids.
- **Anna's Taxi:** (651) 313-1318, 508 1st Ave SW, Forest Lake, MN 55025, <https://new-annas-taxi-taxi-service.business.site/> or newannastaxi@gmail.com Taxi service based out of Forest Lake, operating 24/7 for \$2.50 per mile.
- **Arrowhead Transit:** (800) 862-0175, 702 3rd Ave S, Virginia, MN 55792, Public transit in Pine county offering bus service.
- **Attaboy's Taxi:** (320) 245-5355, 606 MN 123 Ste E, Sandstone MN 55072 - taxi service, based out of Sandstone offering curb to curb service.
- **Blue Button Transport:** (612) 466-3785, 312 Main St. NW, Suite 2, Elk River MN 55330, <http://www.bluebuttontransport.com/> 24/7 operations for senior and disabled clients, serving Princeton. Individual rides, waiver services or private pay (base charge and per mile.) 24-hour advance notice required.
- **Brad's Taxi East Central Transportation LLC:** (763) 302-9245, 1698 301st NE, Isanti, MN 55040, <https://www.facebook.com/pg/East-Central-Transportation-Brads-Cab-1132080666806113/about/>
- **Brainerd Crow Wing Transit:** (866) 925-7433, 501 Laurel St., Brainerd MN 56401, <https://www.ci.brainerd.mn.us/195/Transit> Public transit provider.
- **C & C Taxi Inc.:** (612) 723-5766, 22709 Danube St. NE, Stacy MN 55079
- **Cambridge Cab Inc.:** (763) 552-8294, 1103 Blossom Blvd NW, Isanti MN 55040, <http://cambridge-cab.com/> 24/7 taxi service in Cambridge Isanti, Princeton, Braham, Bradford, North Branch, Stark, Stanchfield, Dalbo, etc. Cab base rate \$2.80/mile, contracted at lesser rate for repeat service. Individual service unless part of the bar safe-cab evening route.

TRANSIT PROVIDERS

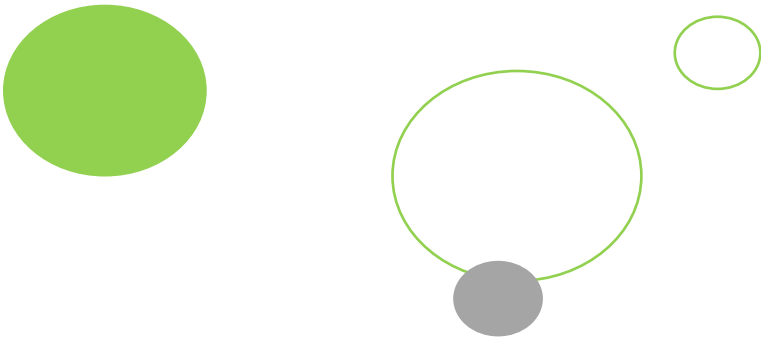
- **Cambridge Transportation:** (651) 340-7571, 2900 Clinton Ave, Minneapolis MN 55408, <http://www.cambridgetransportation.com/> or info@cambridgetransportation.com Medical transportation only, operating in all counties, wheelchair accessible, charge matching state rate \$18 base and \$1.55 per mile. Individual transport, prior day notice, contracted with all major insurance companies, private pay option as well.
- **County Chauffeurs:** (651) 257-4876, 280 Andrews Ave #338, Center City, MN 55012, <https://quality-mobility-equipment-county.business.site/> call for a quote and \$2 per mile charge, not handicap accessible.
- **Empower Recovery Services LLC:** (320) 629-0059, 645 3rd Ave SW, Pine City, MN 55063, <https://www.empowerrecoveryservices.org/> Or empowerrecoveryservices@gmail.com Located in Pine City, giving patients rides to therapy sessions.
- **Great River Area Faith in Action:** (763) 263-0274, 13074 Edgewood St SE, Becker, MN 55308, <https://www.grfia.org/transportation/> Or info@grfia.org Transportation for those over age 60 unable to move unassisted.
- **Groome Transportation:** (218) 724-4676, 4884 Miller Trunk Highway, Hermantown, MN 55811, <https://groometransportation.com/minneapolis-st-paul-airport/duluth/> Airport transportation along 35 from Duluth to St. Paul. Charge based on origination and destination. Must meet at designated pick up locations.
- **Health East Medical Transportation (MedKab):** (651) 232-1717, 799 Reaney Ave, Saint Paul, MN 55106, <https://www.fairview.org/services/medical-transportation> Wheelchair transport.
- **Heartland Bus:** (651) 213-5790, 245 2nd Ave SE, Cambridge, MN 55008, <https://www.rideyourbus.com>
- **Heartland Express:** (651) 213-5790, 245 2nd Ave SE, Cambridge MN 55008, <https://www.chisagocounty.us/301/Public-Transit---Heartland-Express> Public transit out of Chisago and Isanti counties. Fee free through year end because of COVID.
- **Kuehn's Limousine:** (320) 272-4358, 1376 155th Ave, Ogilvie, MN 56358, Limo service out of Ogilvie.

TRANSIT PROVIDERS

- **Lee's Limousine:** (651) 462-5466, 26237 Forest Blvd, Wyoming, MN 55092, https://www.facebook.com/LeesLimousine/?ref=br_rs Limo service out of Wyoming.
- **Lifts: Lee Isaacson's Friendly Transportation Service:** (888) 469-7433, 730 Main St S, Pine City, MN 55063, info@liftstransportation.com
- **LJ's Handi-Van:** (763) 389-9440, 15001 309th Ave NW, Princeton, MN 55371, jwiedewitsch@gmail.com Mille Lacs county. Wheelchair accessible. Insurance billing or private pay. \$35 average base rate (situational based on one way/round trip/wait time) then \$1.50 per mile.
- **Loving Hands Transportation:** (763) 607-8700, 26407 136th St NW, Zimmerman, MN 55398 <https://www.lovinghandstransportation.com/> Or info@lovinghandstransport.com NEMT and specialized transportation for ambulatory patients in Mille Lacs and Isanti counties.
- **Lyft:** download app, app-based ride-hailing, fee based on starting and ending destinations. Availability and hours based on driver.
- **Medi-van:** (800) 422-0976, 900 Longview Dr, Detroit Lakes, MN 56501, <http://medi-van.org/> Or lmedivan@tekstar.com Providing full medical transportation within a 200 mile radius of Detroit Lakes.
- **Mid Minn Transport LLC:** (320) 250-0499, 23051 23rd Ave, Saint Augusta, MN 55320, <https://midmintransportllc.com/> NEMT in central MN providing wheelchair and ambulatory service.
- **MTM:** (866) 467-1724, 635 Maryville Centre Drive, St. Louis, MO 63141, <https://www.mtm-inc.net/minnesota/> NEMT contracted by county.
- **North Branch Cab:** (651) 674-7979, 6356 Elm St, North Branch, MN 55056, taxi out of North Branch.
- **North Country Cab:** (320) 629-1441, PO Box 52, Rush City, MN 55069, taxi out of Rush City.
- **Princeton Cab:** (763) 438-6169, 1103 Blossom Blvd NW, Isanti, MN 55040, <https://www.cambridge-cab.com/> taxi out of Princeton, MN.
- **Pro Cab:** (763) 464-5544, PO Box 478, Big Lake, MN 55039, <https://www.callprocab.com> taxi and airport shuttle out of Big Lake.

TRANSIT PROVIDERS

- **River Rider Public Transit:** (763) 263-1010, 17221 198th Ave NW Ste C, Big Lake, MN 55309, <http://www.riverridertransit.com>
- **Schu-Tran:** (320) 968-7478, 325 Glen St, Foley, MN 56329, schutran@gmail.com NEMT provider for all modes.
- **Select Transportation:** (763) 267-5999, 12631 Fremont Ave Ste 3, Zimmerman, MN 55398, <https://www.facebook.com/KenGreen2016/> Transportation out of Zimmerman.
- **Sherburne Volunteer Driver Program:** (763) 765-3100, 13880 Business Center Dr NW Ste 100, Elk River, MN 55330, <https://www.co.sherburne.mn.us/996/Transportation-Program> Or veterans@co.sherburne.mn.us Veteran transport around Sherburne county area.
- **Sue's Bus Service:** (320) 556-3482, 1686 Church Ave, Bock, MN 56313
- **Timber Trails:** (888) 217-5222, 905 Forest Ave E Ste 127, Mora, MN 55051, <https://timbertrailstransit.com/> Public transportation for Kanabec county. Bus and volunteer driver options available.
- **Tri-CAP:** (320) 251-1612, 1210 23rd Ave S, Waite Park, MN 56387, <https://tricap.org/transportation/> Public transportation in Mille Lacs county.
- **Uber:** download app, app-based, ride-hailing. Fee based on starting and ending destination. Availability and hours based on driver.
- **Yellow Cab of Elk River:** (763) 400-8010, 805 School St NW, Elk River, MN 55030, taxi out of Elk River.



CAR CHARGING STATIONS

Car Charging Station	Car Charging Location
Chisago County	
North Branch	38830 Forest Blvd, North Branch, MN 55056
Isanti County	
Alina Health Isanti Clinic	300 5th Ave NE, Isanti, MN 55040
Best Western Isanti	409 Main Street E, Isanti, MN 55040
Cambridge Medical Center	701 Dellwood St S, Cambridge, MN 55008
Coborn's Marketplace	209 6th Avenue Northeast, Isanti, MN 55040
Country Camping Tent & RV	27437 Palm Street NW, Isanti, MN 55040
East Central Energy	412 Main Ave. N, Braham, MN 55006
Goodwill	1400 1st Ave E, Cambridge, MN 55008
Hayford Ford	1330 301st Ave NE, Isanti, MN 55040
John Hirsch's Cambridge Motor	700 Garfield St S, Cambridge, MN 55008
Kanabec County	
City of Mora	706 Frankie Ln, Mora, MN 55051
City of Mora	Railroad Ave, Mora, MN 55051
Mille Lacs County	
City of Princeton	498 1st St, Princeton, MN 55371
Fat Jacks Cabaret	1682 Wall Avenue, Bock, MN 56313
Grand Casino Mille Lacs	777 Grand Avenue, Onamia, MN 56359
Milaca Chamber of Commerce	235 2nd St SW, Milaca, MN 56353
Princeton (coming soon)	701 Northland Dr, Princeton, MN 55371
South Isle Family Campground	39002 State Highway 47, Isle, MN 56342
Pine County	
Doc's Sports Bar & Grill	34427 Majestic Pine Dr, Sturgeon Lake, MN
Family Pathways	800 Main St. S, Pine City, MN 55063
Grand Casino Hinckley	777 Lady Luck Dr, Hinckley, MN 55037
Hinckley Supercharger	404 Fire Monument Rd, Hinckley, MN 55037
Moose Lake	201 Arrowhead LN, Moose Lake, MN 55767
Moose Lake Brewing Company	244 Lakeshore Dr, Moose Lake, MN 55767

INDEX

Chisago County

Attaboy's Taxi.....	7
C & C Taxi Inc.....	7
County Chauffeurs	8
Heartland Bus.....	9
Heartland Express	9
Lee's Limousine	9
North Branch Cab.....	10
North Country Cab	10

Isanti County

Attaboy's Taxi.....	7
Brad's Taxi East Central Transportation	7
Cambridge Cab Inc.	8
Cambridge Transportation.....	8
Heartland Bus.....	9
Heartland Express	9

Kanabec County

Attaboy's Taxi.....	7
Kuehn's Limousine	9
Timber Trails	11

Mille Lacs County

Attaboy's Taxi.....	7
Brainerd Crow Wing Transit.....	7
Great River Area Faith in Action	8
Kuehn's Limousine	9
LJ's Handi-Van	9
Loving Hands Transportation	9
Princeton Cab.....	10
Schu-Tran	10
Select Transportation.....	10
Sherburne Volunteer Driver Program	10
Sue's Bus Service	11
Tri-CAP	11

Pine County

Arrowhead Transit 7
Attaboy's Taxi..... 7
Empower Recovery Services 8
Groome Transportation 8
Health East Medical Transportation 8
Lifts Lee Isaacson's Friendly Transportation Service..... 9

Other

Allegiance Transportation 7
American Transport 7
Anna's Taxi 7
Blue Button Transport..... 7
Lyft 9
Medi-van 9
Mid Minn Transport 10
MTM..... 10
Pro Cab..... 10
River Rider Public Transit 10
Uber 11
Yellow Cab of Elk River 11